

JBC

www.jbctools.com

English



Hot Air Station

Ref. JT-C

Packing List

The following items should be included:

JTE Control Unit1 unit
Ref. JTE-1C
JTE-2C
JTE-9C

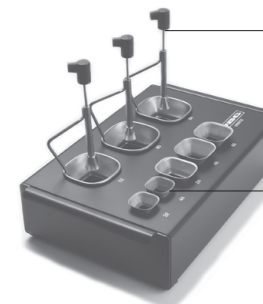
Stand1 unit
Ref. JT-SB

Heater hose set1 unit
Ref. JT-T1A (100V / 120V)
JT-T2A (230V)



Extractor desk*1 unit
Ref. 0008752

JT Accessory set
Ref. 0012332



Extractors*
Ref. E2184
E2064
E2052

Tripod*
Ref. T2050
T2250



Protectors*
Ref. P2220
P2230
P2235
P4000
P4010

Suction Tube*
Ref. 0932330



Power Cord1 unit
Ref. 0009417
(100V/120V)
0009401
(230V)

Manual1 unit
Ref. 0014984

Suction Cups*
Ref. 0930110
Ø 10 - 0934050 (x3)
Ø 4.7 - 0934070 (x1)

Nozzles
Ref. JN2015
JN2012
JN2020



* Not supplied with JT-2QC / JT-1QC / JT-9QC

Features

USB-B connector

Update the station software from the JBC website

Activates the suction pump



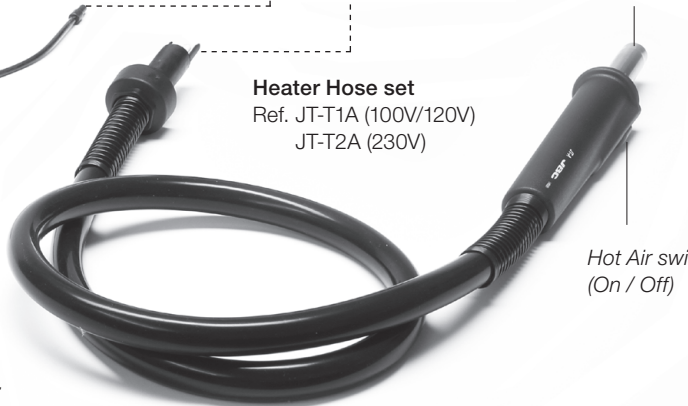
Heating element

Heater Hose set
Ref. JT-T1A (100V/120V)
JT-T2A (230V)

Hot Air switch (On / Off)

Suction Tube
Ref. 0932330
For tripods and extractors

Another connectable tool:
Precision Heater hose set
Ref: TE-TB



Equipotential connection

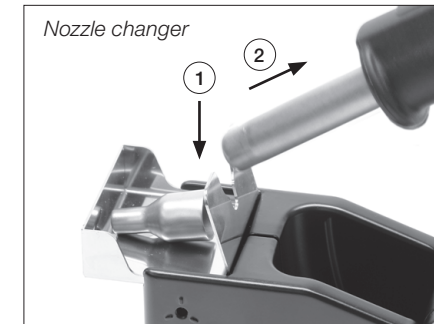
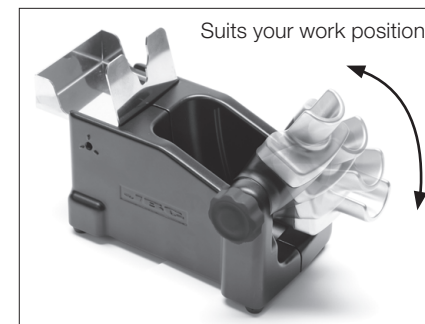


To Pedal
Ref. P-005
Press the pedal to start hot air and release to stop.

Power Socket

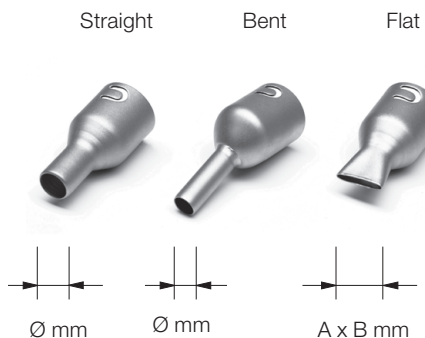
Fuse

Adjustable Stand with Nozzle Changer



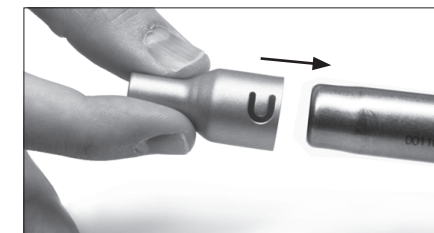
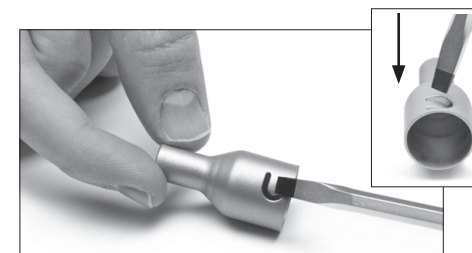
Compatible Nozzles

The JT-TA works with JT nozzles. Find the model that best suits your soldering needs in www.jbctools.com



Ref.	Shape	Size
JN2020	Straight	Ø 8mm
JN8417	Straight	Ø 10mm
JN2015	Bent	Ø 4mm
JN2012	Bent	Ø 6mm
JN6633	Bent	Ø 8mm
JN7637	Flat	10 x 2mm
JN7638	Flat	20 x 2mm
JN7639	Flat	30 x 2mm

In case of loosely fitting nozzle:

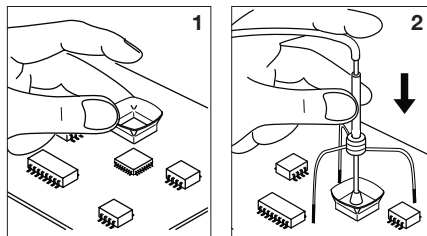


1. Push the nozzle tab inwards with a screwdriver or flat-nosed pliers.

2. Insert the nozzle into the JT-TA Heater again.

Protectors & Extractors

For small components (fig. 1 and 2).
We recommend using the protector + tripod

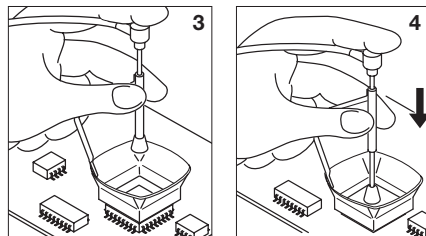


Protectors

* Ref.	AxB (mm)	* Ref.	AxB (mm)
P3353	4,3 x 3	48 P2230	15 x 15
P3786	5,2 x 5,2	60 P4010	17 x 17
P3352	5,2 x 7,5	P4005	18 x 29
P3355	5,2 x 9,5	P4030	18,5 x 18,5
P3356	6,2 x 4,2	P1068	18,5 x 24
P3785	7,2 x 7,2	P2685	28,5 x 28,5
P3784	8,2 x 8,2	P4085	31,5 x 31,5
P4035	9 x 13	P2672	33 x 46
P4040	9,5 x 19	P4002	50 x 50
P4080	9,5 x 21	P3357	52,5 x 14
32 P2220	10 x 10		
P4045	10,5 x 21		
P4090	11 x 16		
24 P2235	12 x 17		
P1249	12 x 23		
44 P4000	12,5 x 12,5		
P3354	13,2 x 13,2		
P4025	13,5 x 21,5		

* Reference Desk

For large components (fig. 3 and 4).
We recommend using the extractors

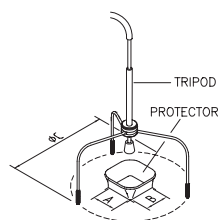


Extractors

* Ref.	AxB (mm)	* Ref.	AxB (mm)
52 E2052	20 X 20	E2124	45 X 45
64 E2064	20 X 26		
80 E2184	24 X 24		
E2068	27 X 27		
E4020	28,5 X 28,5		
E4015	31,5 X 31,5		
E2084	33 X 33		
E2100	38 X 38		

Tripods

* Ref.	øC (mm)
T2050	39
T2250	85



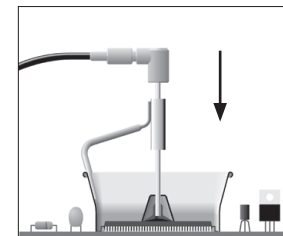
Manual extractor

* Ref.	øD (mm)
E2190	7



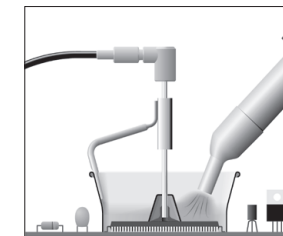
Operation

1. Placing



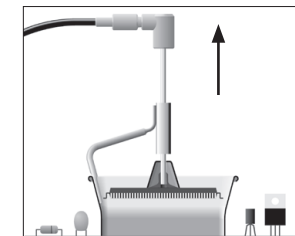
Position the extractor with the appropriate suction cup and press the suction button.

2. Heating



Heat the component by pressing the heater button.

3. Releasing



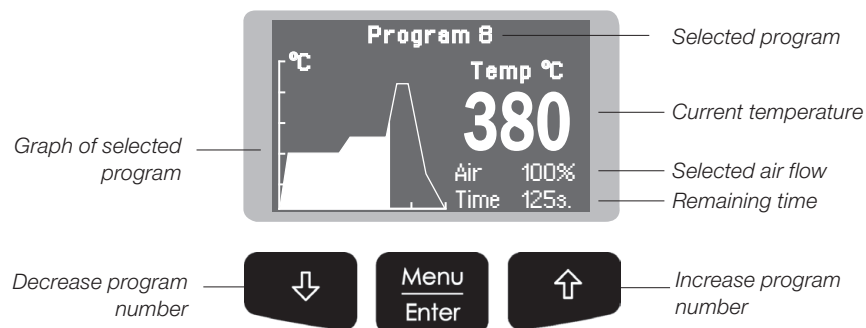
The component lifts off automatically when the solder melts.

Process Control

Manual Mode

You can switch between operating modes (Manual Mode / Program Mode) by pressing the "increase" and "decrease" keys simultaneously for 2 seconds (Only when programs mode is ON).

Program Mode



Edit Program

This option allows you to edit or create a program.

First, you must select the program to edit and then modify the points that make up the program.

Each program is composed of 9 points, each point consisting of 3 parameters:

1. Time (seconds)
2. Temperature (°C / °F)
3. Flow rate (%)

You can delete the last point of the program by selecting "-----" in the time parameter.

Remember that the regulation range permitted by the station is between 150°C and 450°C, so it is not possible to create temperature ramps between room temperature (T OFF) and 150°C.

The station can store up to 25 temperature programs.

The first three programs are installed as an example.

Copy Program

This option allows you to copy a program.

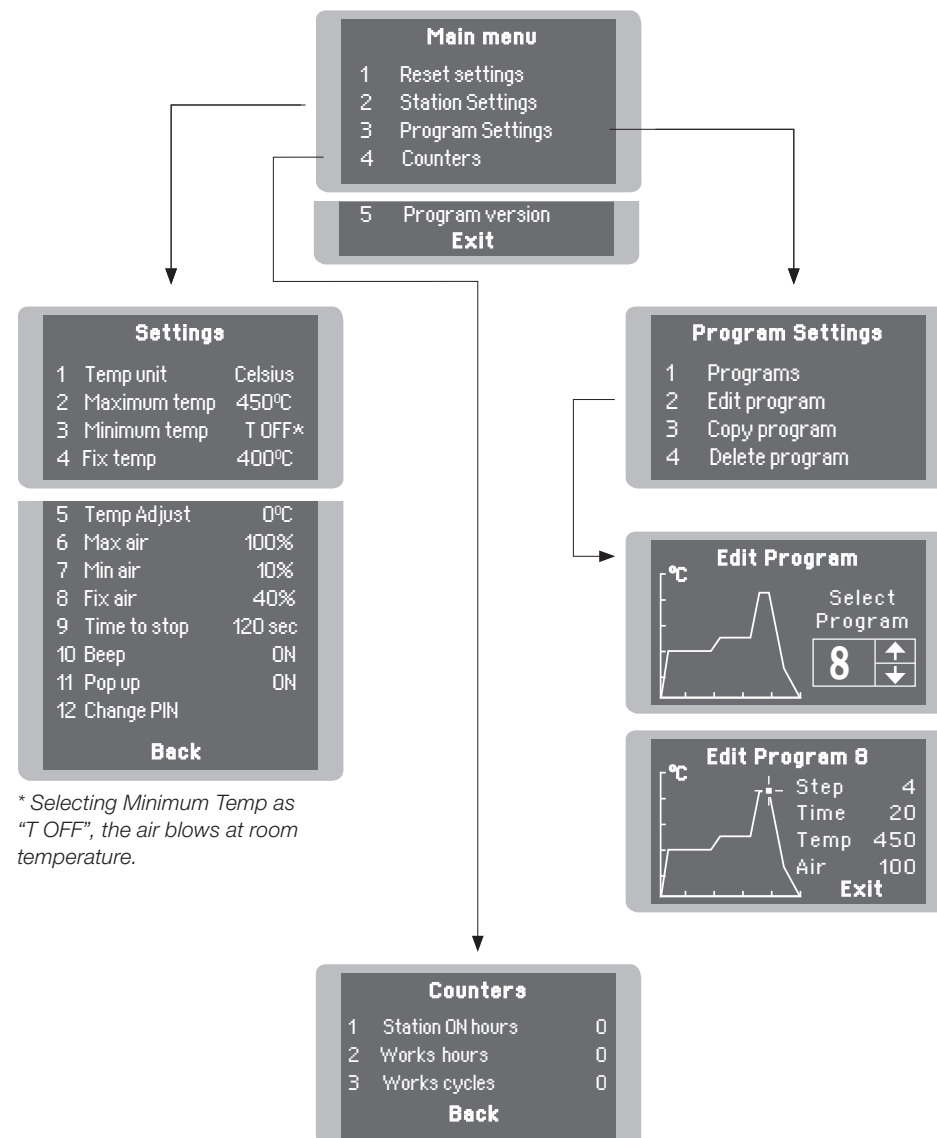
You must select the program source and its destination (where it will be copied).

Delete Program

This option will allow you to delete a previously selected program.

Menu Screen

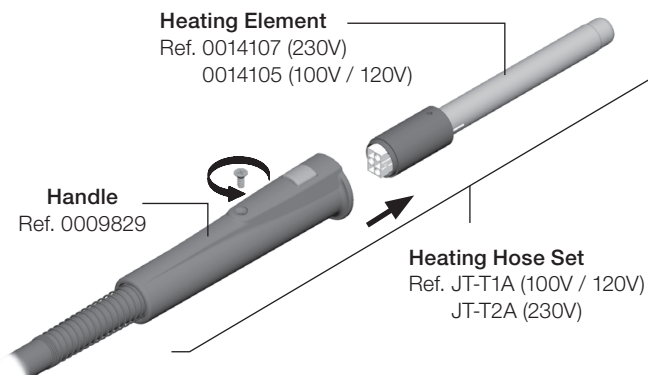
Original PIN: 0105



Replacing the Heating Element

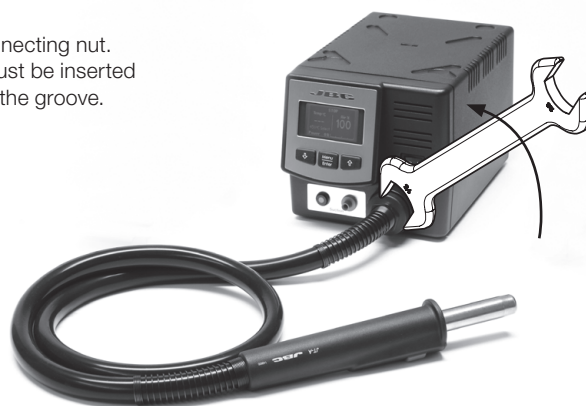
Only perform this operation when the element is cold and the unit is disconnected from the mains.

1. Loosen the screw.
2. Pull the heating element away from the handle.
3. Connect the new heating element, ensuring its pushed all the way in.
4. Tighten the screw.



Changing the JT-TA Heater Hose Set

1. Ensure that the tool is turned off.
2. Use a spanner to unscrew the connecting nut.
3. The tube end of the new heater must be inserted so that the longitudinal rib fits into the groove.
5. Follow the same steps conversely.



Pick & Place (not supplied with JT)

This tool helps you easily place and remove SMDs of any size thanks to the suction pump.

Pick & Place
Ref. T260-A



Bent Needles Set
Ref. 0861660

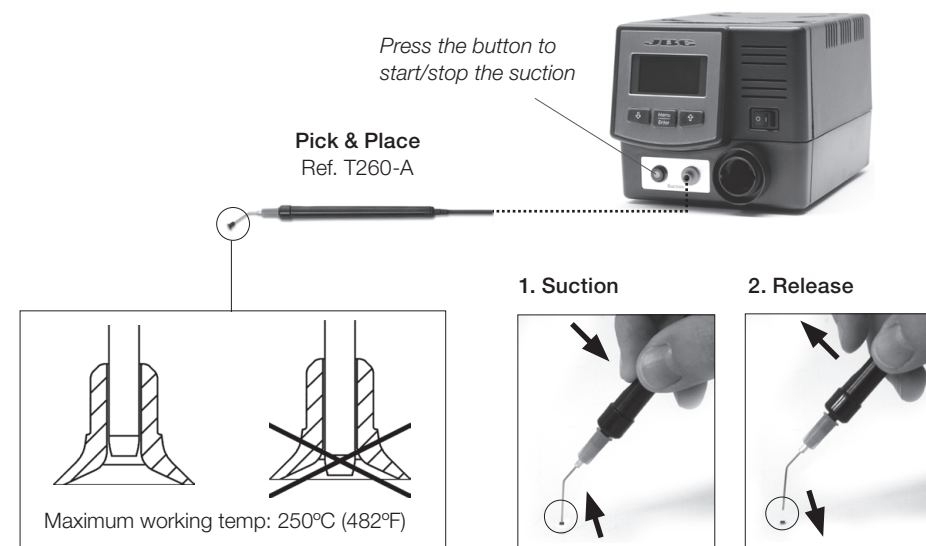


Straight Needles Set
Ref. 0901546



Operation

Choose the needle and the suction cup that best fits the component and start working as follows:



Insert the needle with the appropriate suction cup for a correct suction process.

You should avoid the needle protruding from the lower part.

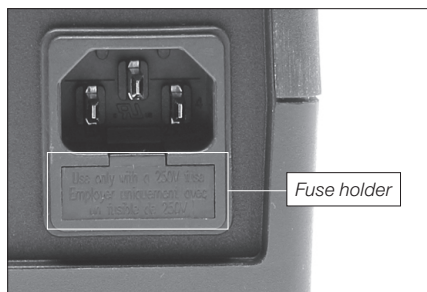
Once the suction is activated, cover the pen hole with your finger and lift off the component.

Lift your finger to release the component in the appropriate place.

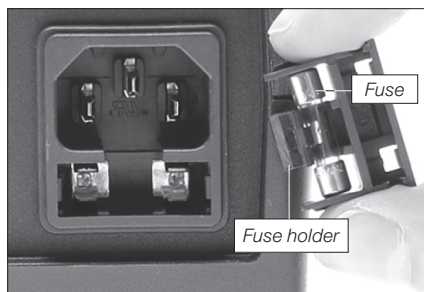
Maintenance

Before carrying out maintenance or storage, always allow the equipment to cool.

- Clean the station screen with a glass cleaner or a damp cloth.
- Use a damp cloth to clean the casing and the tool. Alcohol can only be used to clean the metal parts.
- Maintain heating element clean prior to storage in order to avoid its oxidation. Rusty and dirty surfaces reduce heat transfer.
- Periodically check all cables and tubes.
- Replace a blown fuse as follows:



1. Pull off the fuse holder and remove the fuse. If necessary use a tool to lever it off.



2. Press the new fuse into the fuse holder and replace it in the station.

- Replace any defective or damaged pieces. Use original JBC spare parts only.
- Repairs should only be performed by a JBC authorized technical service.

Safety



It is imperative to follow safety guidelines to prevent electric shock, injury, fire or explosion.

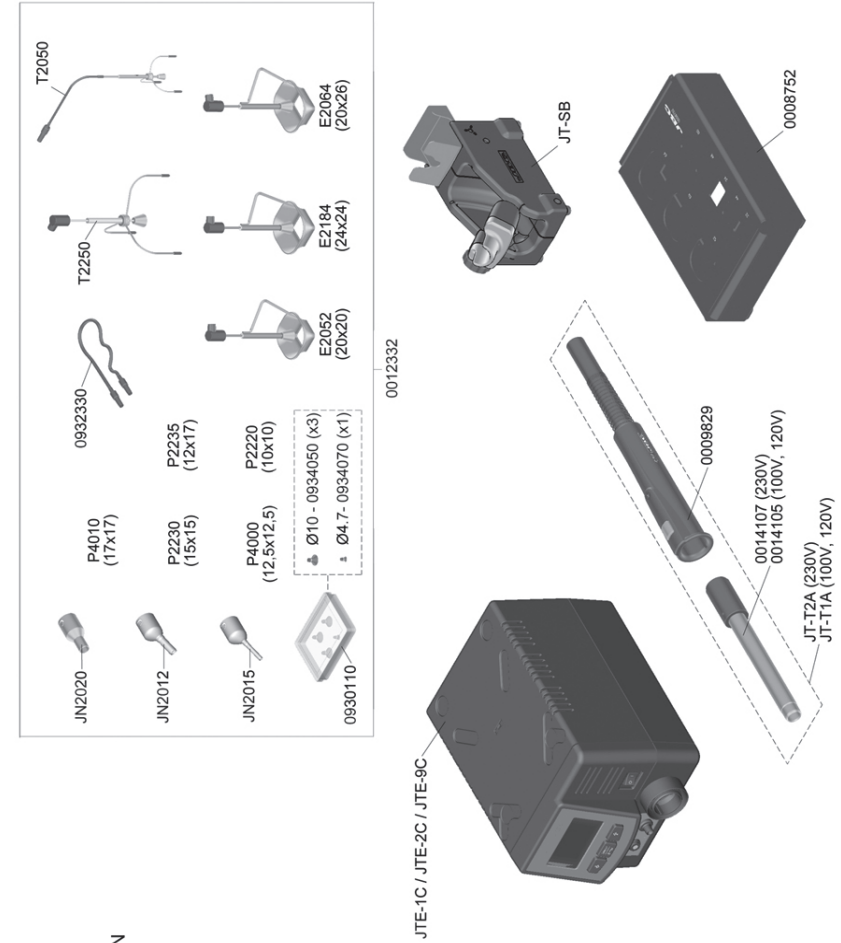
- Do not use the units for any purpose other than soldering or rework. Incorrect use may cause fire.
- The power cord must be plugged into approved bases. Be sure that it is properly grounded before use. When unplugging it, hold the plug, not the wire.
- Do not work on electrically live parts.
- The tool should be placed in the stand when not in use in order to activate the sleep mode. The soldering tip, the metal part of the tool and the stand may still be hot even when the station is turned off. Handle with care, including when adjusting the stand position.
- Do not leave the appliance unattended when it is on.
- Do not cover the ventilation grills. Heat can cause inflammable products to ignite.
- Use a "non residue" classified flux and avoid contact with skin or eyes to prevent irritation.
- Be careful with the fumes produced when soldering.
- Keep your workplace clean and tidy. Wear appropriate protective glasses and gloves when working to avoid personal harm.
- Utmost care must be taken with liquid tin waste which can cause burns.
- This appliance can be used by children over the age of eight and also persons with reduced physical, sensory or mental capabilities or lack of experience provided that they have been given adequate supervision or instruction concerning use of the appliance and understand the hazards involved. Children must not play with the appliance.
- Maintenance must not be carried out by children unless supervised.

Specifications

- JT-1C** 120V 50/60Hz. Input fuse 8A. Control Unit model: **JTE-1C**
JT-2C 230V 50/60Hz. Input fuse 4A. Control Unit model: **JTE-2C**
JT-9C 100V 50/60Hz. Input fuse 8A. Control Unit model: **JTE-9C**
- Weight: 6.7 Kg (14.7lb)
 - Dimensions: 148 x 184 x 140
 - Nominal Power: 700W
 - Temperature selection: Room temperature / 150°C to 450°C (300°F to 840°F)
Cool mode: T Off. Used to blow air at room temperature
 - Ambient Operating Temperature: 10 to 40°C (50-104°F)
 - Air flow regulation: 10-50 SLPM
 - USB connector station-PC
 - P-005 Pedal Connection

Complies with CE standards
ESD protected housing "skin effect"

Exploded View



JT-1C 120V
JT-2C 230V
JT-9C 100V
 HIGH POWER HOT-AIR STATION
 FROM SERIE - 167341

SPARE PARTS	
JTE-1C / JTE-2C / JTE-9C:	
-ENCLOSURES:	0011035
-TOP	0014882
-BOTTOM	0010064
-FRONT	0014982
-BACK	0014982
JTE-1C / JTE-9C:	
-CIRCUIT	0015000
-SUCTION PUMP	0008940
-HOT AIR PUMP	0014867
JTE-2C:	
-CIRCUIT	0015023
-SUCTION PUMP	0008938
-HOT AIR PUMP	0014867
JTE-1C 120V FUSE T-6A	
JTE-2C 230V FUSE T-4A	
JTE-9C 100V FUSE T-6A	

JBC

Warranty

JBC's 2 year warranty covers this equipment against all manufacturing defects, including the replacement of defective parts and labour.

Warranty does not cover product wear due to use or mis-use.

In order for the warranty to be valid, equipment must be returned, postage paid, to the dealer where it was purchased.



This product should not be thrown in the garbage.

In accordance with the European directive 2002/96/EC, electronic equipment at the end of their life must be collected and returned to an authorized recycling facility.